



CELLOHEXAOSE (Lot 151001a)

O-CHE

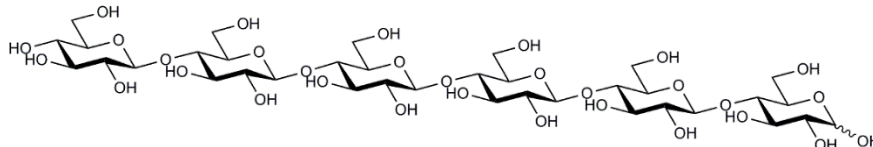
10/15

Molecular

Formula: $C_{36}H_{62}O_{31}$

MW: 990.86

CAS No. 2240-27-9



PREPARATION:

Prepared by controlled acid hydrolysis of cellulose acetate.

PURITY: > 95%

HPLC:

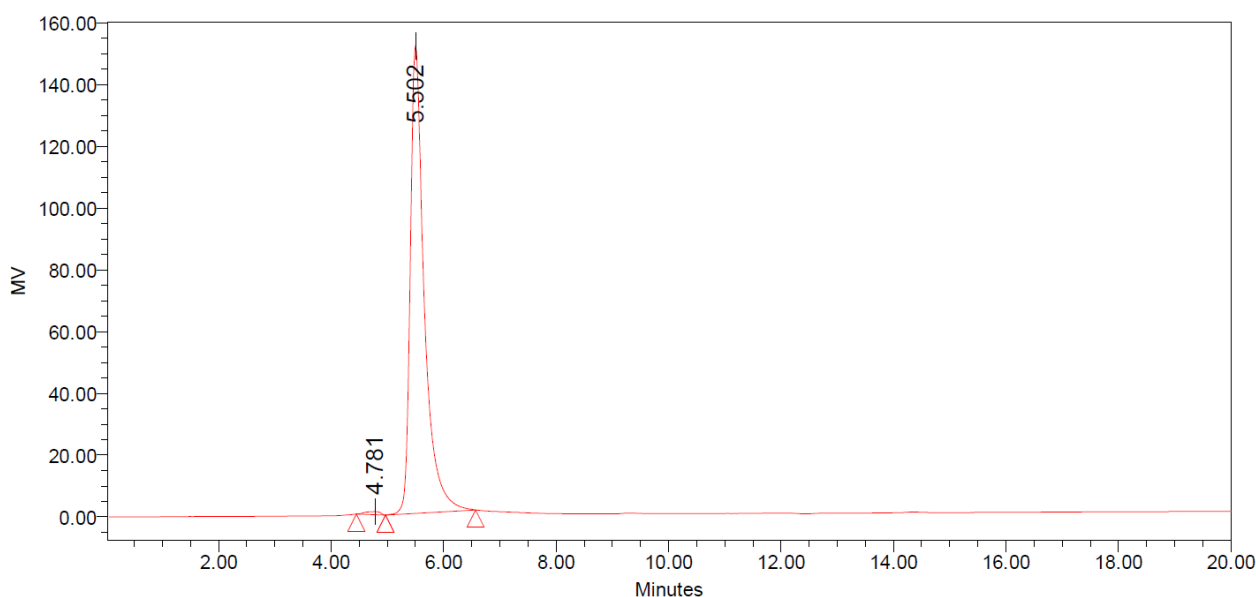
Column: Waters SugarPak I (6.5 x 300 mm)

Temperature: 90°C

Mobile phase: dH₂O with disodium calcium EDTA (50 mg/L) [Sigma Cat No. ED2SC]

Flow rate: 0.5 mL/min

HPLC System: Waters Breeze system, Waters 2410 RI detector and Empower v 2 software



Peak Results

Name	RT	Area	% Area	Height	% Height
1	4.781	19206	0.73	1041	0.68
2	5.502	2627474	99.27	151493	99.32

HPAEC-PAD:

Column: CarboPac PA200 guard and analytical columns (3 x 250 mm).

Temperature: 20°C

Detector: Au electrode; waveform Carbohydrate, standard quad

Flow rate: 0.4 mL/min

IC system: Dionex ICS5000+ DP system and Chromeleon 7 software.

A stepwise linear gradient method was employed as shown.

Time (min)	100 mM NaOH (%)	120mM NaOAc in 100 mM NaOH
0	100	0
4	100	0
5	80	20
8	65	35
21	50	50
23	0	100
26	0	100
27	100	0
30	100	0

